

Châteauroux international biennial of ceramics
19th edition
8th july – 17th september 2017

idem

**It makes no difference, identical,
it's all the same...**

Idem expresses the issue in the upcoming International Biennial of Ceramics of Châteauroux : to show that even if a border exists in the arts, that border does not separate ceramics from art, but rather art from non-art. To prove, in other words, that the value of intentionality – which is considered essential in art – is shared not only by painters, artist engravers, sculptors or photographers, but also by ceramicists. As they are becoming increasingly versatile, artists crave the breaking down of barriers. They are meeting on similar historical paths, cultivating the same territory and exploring the same horizons.

The exhibition will be built around fourteen spaces to be inhabited, different sorts of white cubes of various dimensions and will present the work of 33 international artists. Each space will house an encounter between 2 or 3 artists each working in different materials.

The exhibition will bring together works animated by similar intentions and/or a similar artistic approach.

The project aims at showing strong artistic identities boosted by the encounter.

CURATOR

Stéphanie Le Follic-Hadida

PRESS CONTACTS

Musée-Hôtel Bertrand, Châteauroux
Denis Gaillard
denis.gaillard@chateauroux-metropole.fr
+33 (0)2 54 61 12 30

Manon Alberger, in charge
of the Biennial
contact@manonalberger.com
+33 (0)6 71 15 43 52

PRACTICAL INFORMATION

Free entrance
from tuesday to sunday,
10h-12h / 14h-18h

Les Musées de Châteauroux

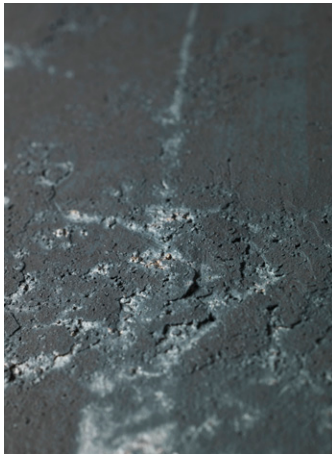
Michèle Naturel, Museums director
Musée-Hôtel Bertrand
2, rue Descente des Cordeliers
&
Couvent des Cordeliers
4, rue Alain Fournier
36000 Châteauroux

PARTNER GALLERIES

Galerie Maria Lund, Paris
Galerie Jean Fournier, Paris
Galerie Salon Vert, Genève
Galerie Fabry de Schoffel, Paris
Suzanne Tarasiève, Paris
Espace privé Hélène Aziza, Paris



idem, a story of face-to-face



La Pierre (détail), 2010
37 x 52 x 11 cm,
grès émaillé
© Thomas Deschamps

laurence
crespin



choi
byung-so

Sans titre, 2013
54 x 40 cm,
stylo et mine de plomb
sur papier journal,
courtoisie Choi
Byung-So et Galerie
Maria Lund, Paris
© Marc-Antoine Bulot

marc alberghina
armelle benoit
stéphane bordarier
emmanuel boos
anne brégeaut
alison britton
choi byung-so
laurence crespin
rowena dring

laurent esquerré
zachary eastwood-bloom
anthony girardi
jean girel
ruth gurvich
jean-luc herman (*œuvres de*)
daisuke ichiba
eva jospin
esben klemann
lee bae
patrick loughran
virgile loyer
madé & jean-marc fondimare
paul march
aurelie nemours (*œuvres de*)
lawson oyekan
michel pérot
susanne ring
agnès rosse
hélène schmitz
xue sun
stéphane trois carrés
arnaud vérin
heike weber



suzanne
ring

**Pocahontas loves
Winnetou**, 2016
H. 150 cm,
terre cuite, bois, cuir
© Max Kraanen

eva
jospin

Forêt, 2013
90 x 130 x 17 cm,
bois et carton,
courtesy Galerie
Suzanne Tarasiève,
Paris, coll. part.
© Olivier Toggwiller

